



South Kent

ENERGY PARK

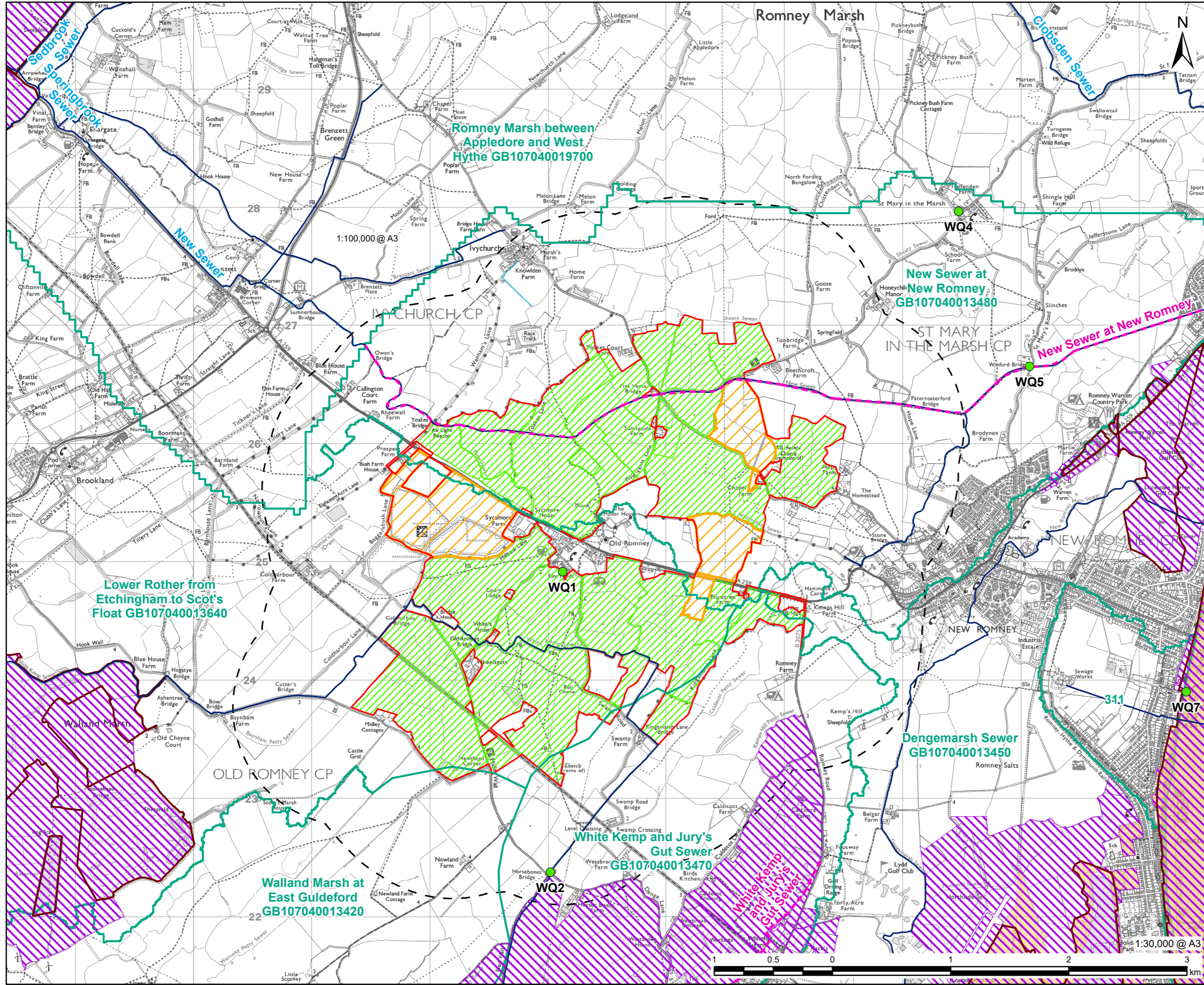
Planning Inspectorate Reference: EN0110035

Environmental Impact Assessment Scoping Report - Figures
June 2026



Table of Contents

PART 1	
Figure 1-1	Proposed Development Location Plan
Figure 2-1	Environmental Constraints
Figure 3-1	DCO Site Boundary and Land Use
Figure 6-1	DCO Solar Projects within 5 km of the Proposed Development
PART 2	
Figure 8-1	Designated Heritage Assets
Figure 8-2	Non-Designated Heritage Assets
PART 3	
Figure 9-1	Sites statutorily designated for their biodiversity value at an International (European) level up to 30 km from the DCO Site Boundary
Figure 9-2	Sites statutorily designated for their biodiversity value at a National or local level within 5 km of the DCO Site Boundary
Figure 9-3	Location of non-statutorily designated sites and priority habitats within 2 km of the DCO Site Boundary
Figure 9-4	Habitats within the DCO Site Boundary
PART 4	
Figure 10-1	Surface Water Features and their Attributes
Figure 10-2	Bedrock Aquifers
Figure 10-3	Groundwater Features and their Attributes
Figure 10-4	Fluvial and Tidal Flood Risk
Figure 10-5	Surface Water Flood Risk
PART 5	
Figure 11-1	Landscape and Visual Study Area
Figure 11-2	Zone of Theoretical Visibility (ZTV) DCO Site Boundary, North – Bare Earth
Figure 11-3	ZTV DCO Site Boundary, South – Bare Earth
Figure 12-1	Noise and Vibration Study Areas and Noise Monitoring Locations
Figure 13-1	Study Area for Socio-Economic Impacts
PART 6	
Figure 14-1	Predictive Agricultural Land Classification (ALC)
Figure 14-2	Soil Associations
Figure 15-1	Transport and Access Study Area
Figure 15-2	Existing Walking and Cycling Network
Figure 15-3	Bus Stops and Routes
Figure 15-4	Railway Stations
Figure 15-5	Traffic Survey Locations
Figure 17-1	Air Quality Study Area for South Kent Energy Park
Figure 17-2	Ground Conditions Study Area Boundaries



PROJECT



CONSULTANT

AECOM Limited
3 Rivergate
Bristol, BS1 6EW
www.aecom.com

LEGEND

- DCO Site Boundary
- Main Site
- Interconnecting Areas
- DCO Site Boundary - 1km Buffer
- EA Water Quality Monitoring Stations
- Main River
- Ordinary Watercourse
- Water Framework Directive Watercourse
- Water Framework Directive Waterbody Catchment
- Designated Sites:**
- Site of Special Scientific Interest (SSSI)
- Special Area of Conservation (SAC)
- Ramsar Sites

NOTES

© Crown copyright and database rights 2025 Ordnance Survey AC0000808122.
 © Natural England copyright. Contains Ordnance Survey data © Crown copyright and database right 2026.
 © Environment Agency copyright and/or database right. Contains OS data © Crown copyright and database right (2023)
 © Environment Agency copyright and/or database right. Contains OS data © Crown copyright and database right 2026.

ISSUE PURPOSE

Scoping Report

PROJECT NUMBER

60716220

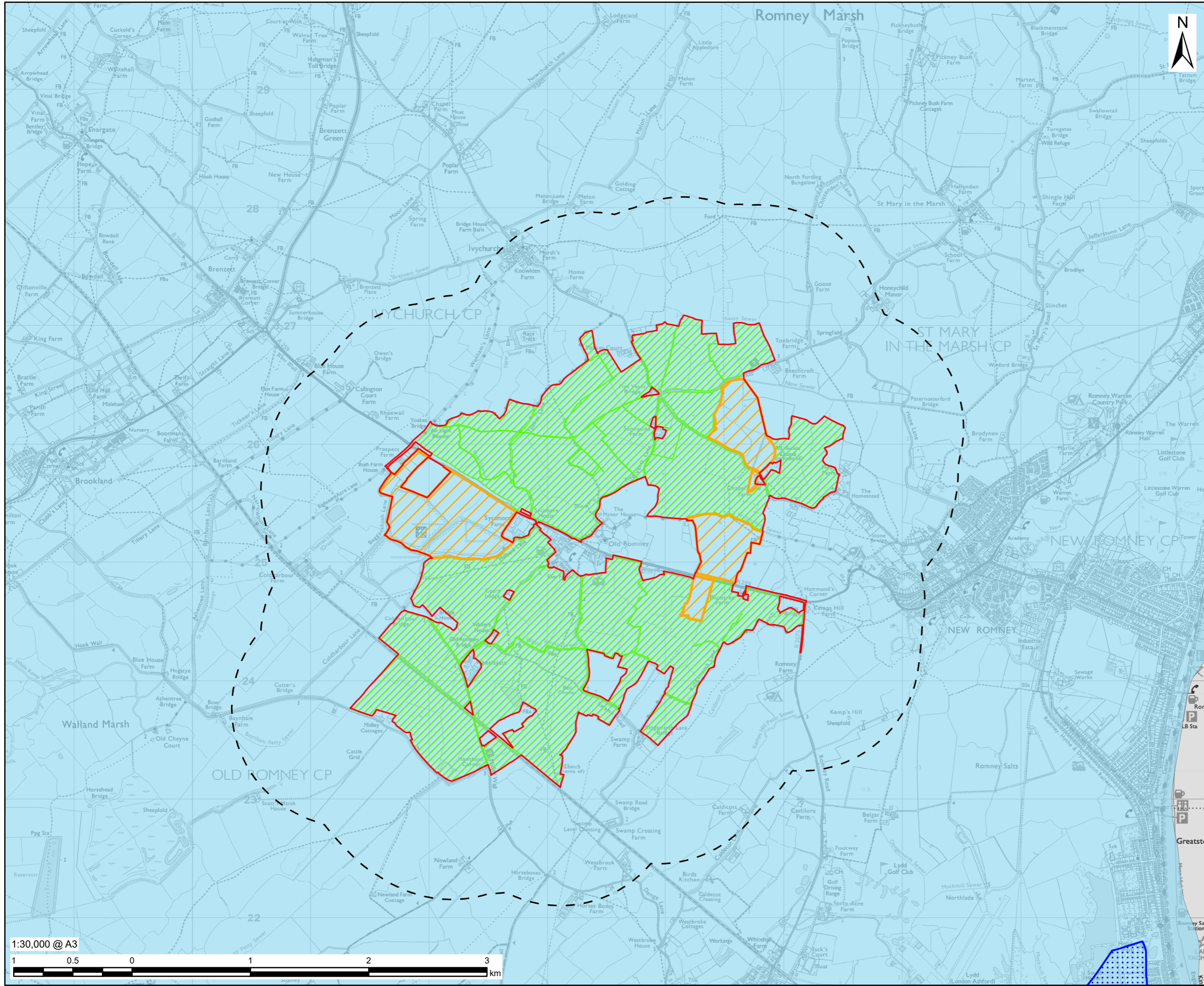
FIGURE TITLE

Surface Water Features and their Attributes

FIGURE NUMBER

Figure 10-1

This drawing has been prepared for the use of AECOM's client. It may not be used, modified, reproduced or relied upon by third parties, except as signed by AECOM or as required by law. AECOM accepts no responsibility, and denies any liability whatsoever, to any party that uses or relies on this drawing without AECOM's express written consent. Do not scale this document. All measurements must be obtained from the stated dimensions.



PROJECT



CLIENT



CONSULTANT

AECOM Limited
3 Rivergate
Bristol, BS1 6EW
www.aecom.com

LEGEND

- DCO Site Boundary
- Main Site
- Interconnecting Areas
- DCO Site Boundary - 1km Buffer
- Source Protection Zone (SPZ):
- Zone III - Total Catchment
- Bedrock Aquifer Classification:
- Moderately productive aquifer¹

NOTES

1. Moderately productive aquifer also represents the Secondary A bedrock aquifers.
- © Crown copyright and database rights 2025 Ordnance Survey AC0000808122.
- © Environment Agency copyright and/or database right 2016. All rights reserved. Contains OS data © Crown Copyright and database right 2025, Contains BGS data 2025.

ISSUE PURPOSE

Scoping Report

PROJECT NUMBER

60716220

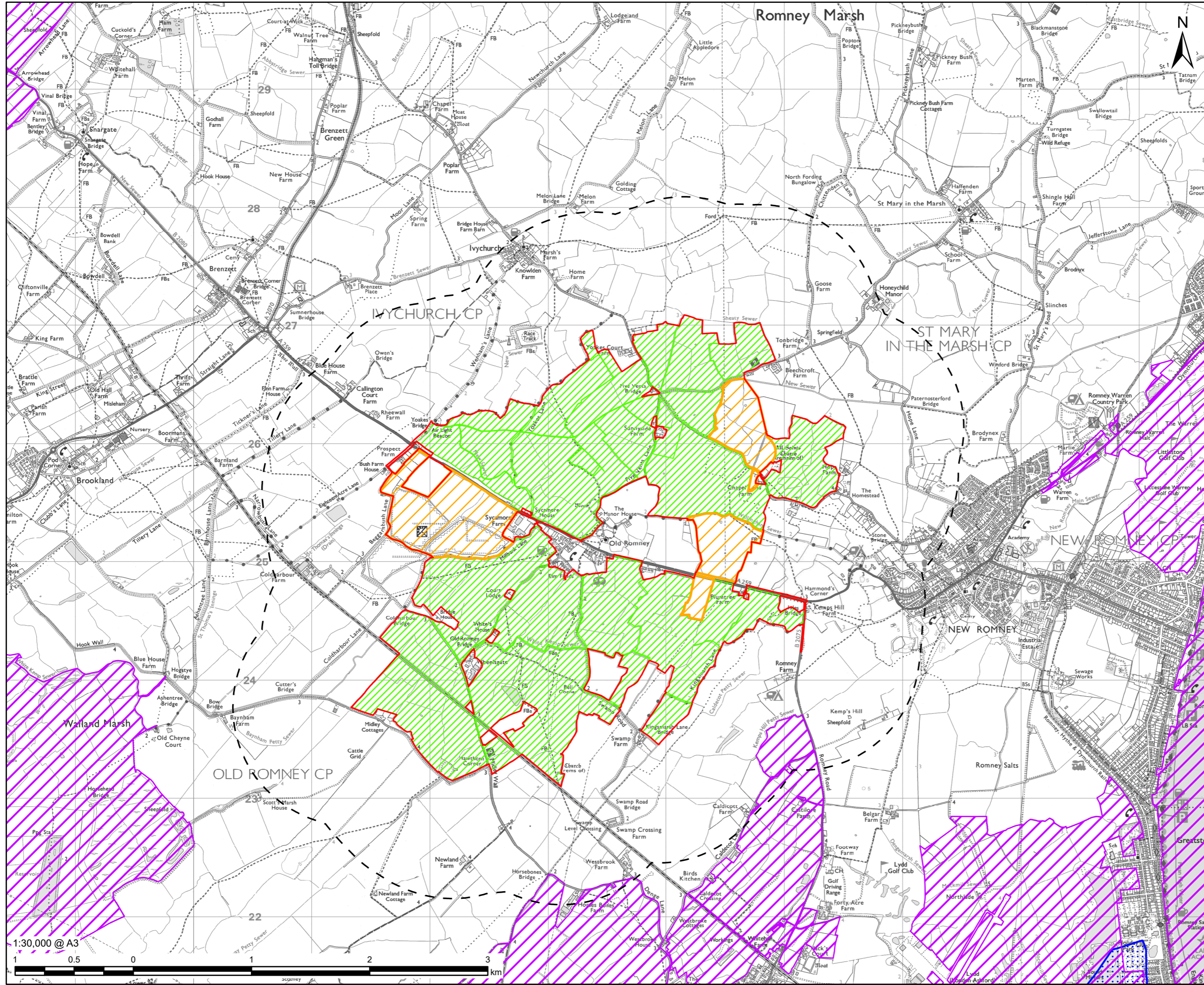
FIGURE TITLE

Bedrock Aquifers

FIGURE NUMBER

Figure 10-2

This drawing has been prepared for the use of AECOM's client. It may not be used, modified, reproduced or relied upon by third parties, except as agreed by AECOM or as required by law. AECOM accepts no responsibility, and denies any liability whatsoever, to any party that uses or relies on this drawing without AECOM's express written consent. Do not scale this document. All measurements must be obtained from the stated dimensions.



PROJECT



CLIENT



CONSULTANT

AECOM Limited
3 Rivergate
Bristol, BS1 6EW
www.aecom.com

LEGEND

- DCO Site Boundary
- Main Site
- Interconnecting Areas
- DCO Site Boundary - 1km Buffer
- Groundwater Dependent Terrestrial Ecosystem (GWDTE)
- Source Protection Zone (SPZ):
- Zone III - Total Catchment

NOTES

- © Crown copyright and database rights 2025 Ordnance Survey AC0000808122.
- © Environment Agency copyright and/or database right 2016. All rights reserved.
- © Environment Agency copyright and/or database right 2026. All rights reserved.
- © Natural England copyright.

ISSUE PURPOSE

Scoping Report

PROJECT NUMBER

60716220

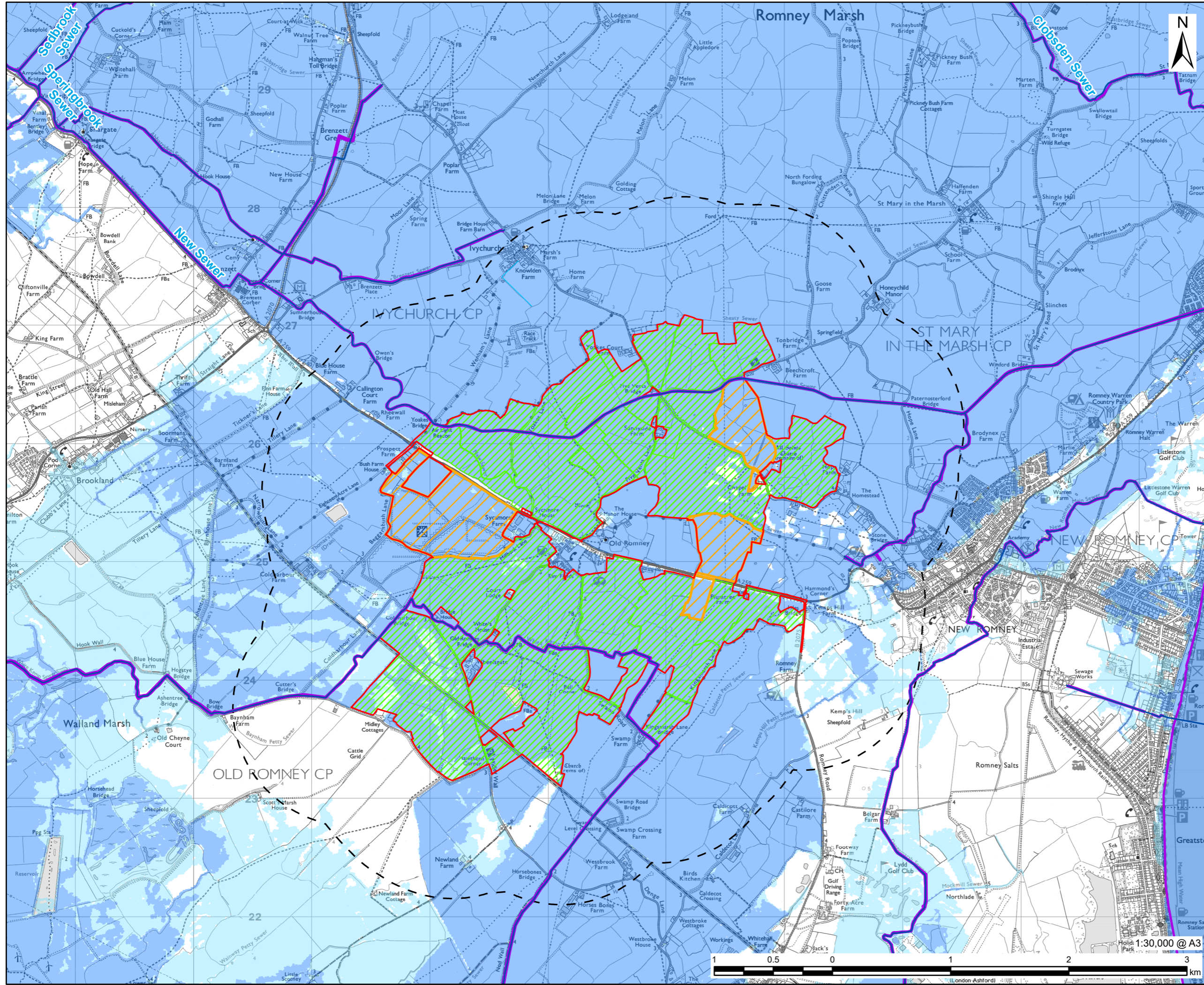
FIGURE TITLE

Groundwater Features and their Attributes

FIGURE NUMBER

Figure 10-3

This drawing has been prepared for the use of AECOM's client. It may not be used, modified, reproduced or relied upon by third parties, except as agreed by AECOM or as required by law. AECOM accepts no responsibility, and denies any liability whatsoever, to any party that uses or relies on this drawing without AECOM's express written consent. Do not scale this document. All measurements must be obtained from the stated dimensions.



PROJECT



CLIENT



CONSULTANT

AECOM Limited
3 Rivergate
Bristol, BS1 6EW
www.aecom.com

LEGEND

- DCO Site Boundary
- Main Site
- Interconnecting Areas
- DCO Site Boundary - 1km Buffer
- Main River
- Ordinary Watercourse
- Spatial Flood Defence
- Flood Zone 2
- Flood Zone 3

NOTES

- © Crown copyright and database rights 2025 Ordnance Survey AC0000808122.
- © Environment Agency copyright and/or database right 2025. All rights reserved.
- © Environment Agency copyright and/or database right 2020. All rights reserved.

ISSUE PURPOSE

Scoping Report

PROJECT NUMBER

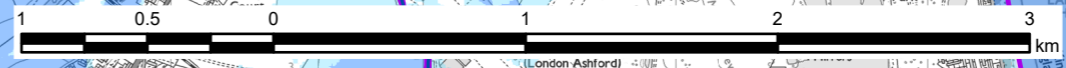
60716220

FIGURE TITLE

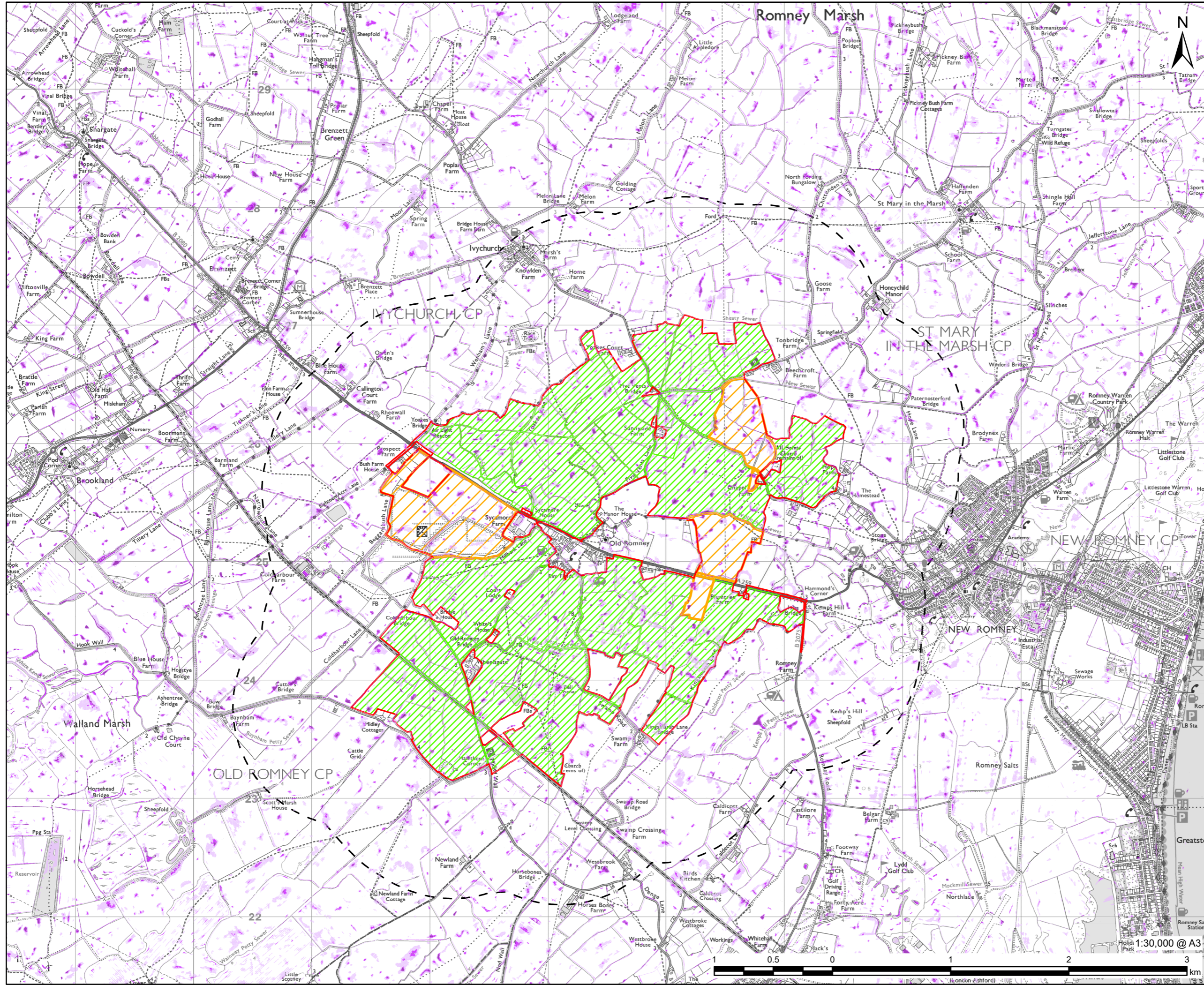
Fluvial and Tidal Flood Risk

FIGURE NUMBER

Figure 10-4



This drawing has been prepared for the use of AECOM's client. It may not be used, modified, reproduced or relied upon by third parties, except as agreed by AECOM or as required by law. AECOM accepts no responsibility, and denies any liability whatsoever, to any party that uses or relies on this drawing without AECOM's express written consent. Do not scale this document. All measurements must be obtained from the stated dimensions.



PROJECT



CLIENT



CONSULTANT

AECOM Limited
3 Rivergate
Bristol, BS1 6EW
www.aecom.com

LEGEND

- DCO Site Boundary
- Main Site
- Interconnecting Areas
- DCO Site Boundary - 1km Buffer
- Risk of Flooding from Surface Water:**
- High - 3.3% Annual Exceedance Probability
- Medium - 1% Annual Exceedance Probability
- Low - 0.1% Annual Exceedance Probability

NOTES

© Crown copyright and database rights 2025
Ordnance Survey AC0000808122.
© Environment Agency copyright and/or
database right 2025. All rights reserved.

ISSUE PURPOSE

Scoping Report

PROJECT NUMBER

60716220

FIGURE TITLE

Surface Water Flood Risk

FIGURE NUMBER

Figure 10-5

This drawing has been prepared for the use of AECOM's client. It may not be used, modified, reproduced or relied upon by third parties, except as agreed by AECOM or as required by law. AECOM accepts no responsibility, and denies any liability whatsoever, to any party that uses or relies on this drawing without AECOM's express written consent. Do not scale this document. All measurements must be obtained from the stated dimensions.